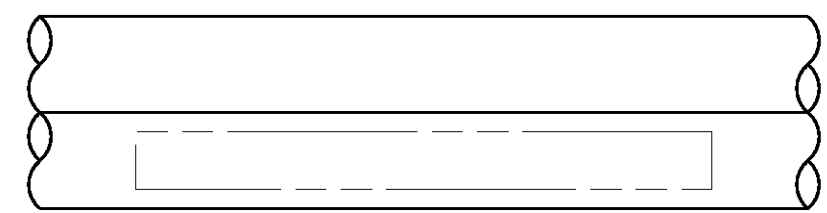
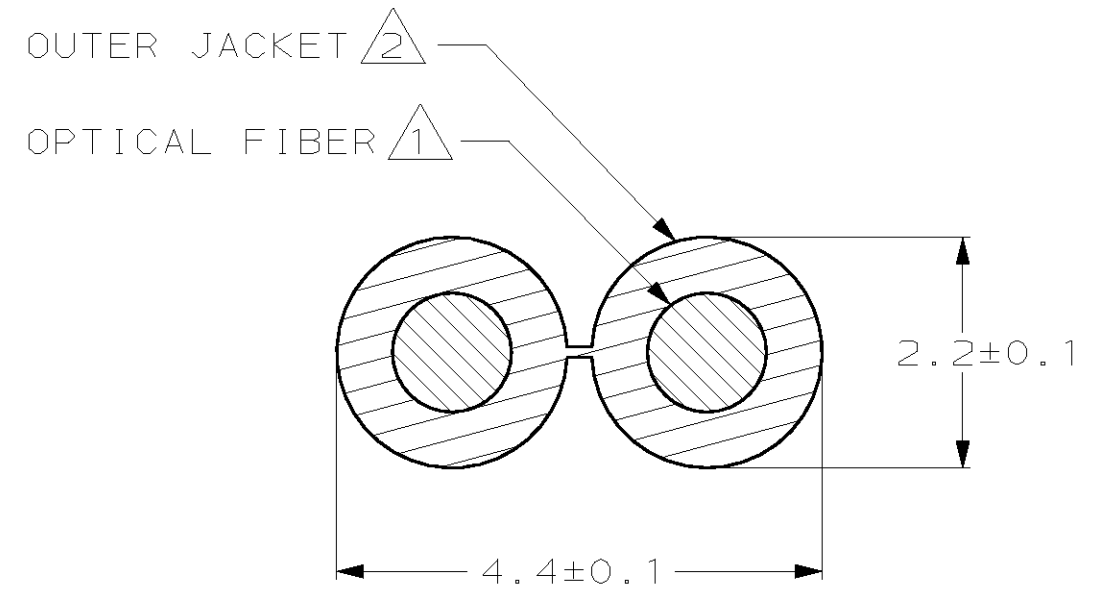


THIS DRAWING IS UNPUBLISHED. RELEASED FOR PUBLICATION, 19 .
 © COPYRIGHT 19 BY AMP INCORPORATED. ALL RIGHTS RESERVED.

LOC	DIST	REVISIONS			
P	LTR	DESCRIPTION	DATE	DWN	APVD
CE	16	G	REV PER 0A00-0037-02	07FEB02	KG SB

- 1 STEP INDEX PLASTIC OPTICAL FIBER
 - A. CORE REFRACTIVE INDEX: 1.49 TYP.
 - B. CLAD REFRACTIVE INDEX: 1.42 TYP.
 - C. NUMERICAL APERTURE: 0.46 TYP.
 - D. CORE DIAMETER: 980±60um.
 - E. CLAD DIAMETER: 1000±60um.
- 2 JACKET
 - A. MATERIAL: POLYETHYLENE.
 - B. COLOR: BLACK.
- 3. ATTENUATION AT 650nm AND 25°C
 - A. TYPICAL: 140 dB/km.
 - B. MAX: 150 dB/km.
- 4. RATINGS
 - A. OPERATING TEMPERATURE: -40°C TO +85°C.
 - B. STORAGE TEMPERATURE: -40°C TO +85°C.
 - C. MINIMUM BEND RADIUS: 25mm.
 - D. TENSILE STRENGTH: 17 kg.
 - E. CABLE WEIGHT: 7.5 kg/km TYP.



50 ^{+1.0} / _{-0.0}	501336-2
500 ^{+10.0} / _{-0.0}	501336-1
LENGTH (METERS)	PART NUMBER

<small>THIS DRAWING IS A CONTROLLED DOCUMENT FOR AMP INCORPORATED. IT IS SUBJECT TO CHANGE AND THE CONTROLLING ENGINEERING ORGANIZATION SHOULD BE CONTACTED FOR THE LATEST REVISION.</small>		DWN 29MAR96 S.URICH CHK 09APR96 M.PETERSON APVD 09APR96 N.MILLER PRODUCT SPEC - APPLICATION SPEC - WEIGHT - CUSTOMER DRAWING	AMP AMP Incorporated Harrisburg, PA 17105-3608 NAME CABLE, FIBER OPTIC, DUAL 1000um PLASTIC, OPTIMATE® SIZE A3 CAGE CODE 00779 DRAWING NO ©=501336 SCALE NT5 SHEET 1 OF 1 REV G
DIMENSIONS: mm 	TOLERANCES UNLESS OTHERWISE SPECIFIED: 0 PLC ±- 1 PLC ±- 2 PLC ±- 3 PLC ±- 4 PLC ±- ANGLES ±- FINISH -	MATERIAL 	